

Certificate Issued To:
BioCell Technology
4695 MacArthur Court 11th Floor
Newport Beach, CA 92660



Work performed at:
Alkemists Pharmaceuticals Inc.
1260 Logan Ave B3
Costa Mesa, CA 92626
714-754-HERB (4372)
714-668-9972 (FAX)
E-mail: info@alkemist.com
Web Site: www.alkemist.com

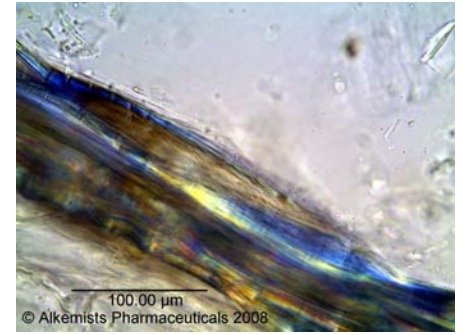
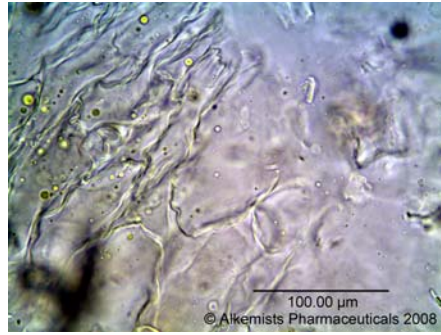
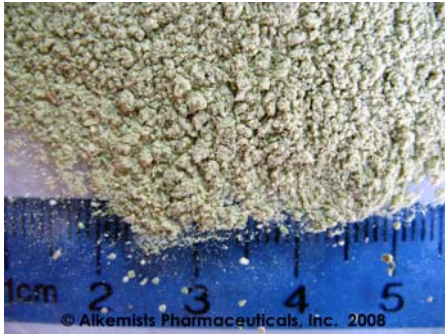
Certificate of Analysis 3 of 3: Hoodia gordonii (KB0207)

Macroscopy & Microscopy with Digital Photo-Documentation

1

2

3



Company Name:	BioCell Technology
Title:	Hoodia gordonii
Plant Part:	aerial part
Sample Received:	4/30/2008
Sample Description:	~35g in a white bottle
Form of Botanical:	crude plant powder
Appearance:	(1) beige to tan powder
Lot #:	KB0207
Sample #:	AU12108BCT
Latin Name:	Hoodia gordonii (Masson) Sweet ex Decne
Reference Sample #:	AU14207AHPA1, AU21906DBL, AU29006TA2, AU20604AP, AU15606AHP2, AU30405TA1 Hoodia gordonii (Masson) Sweet ex Decne authenticated by macroscopic, microscopic &/or TLC studies according to the reference source cited below held at Alkemists Pharmaceuticals, Costa Mesa, CA.
Examiner:	EMS
Magnification:	(2) 400X
Chemical Reagents:	(2) acidified chloral hydrate glycerol solution
Sample Findings:	(2) large thin walled parenchyma showing wrinkled cell walls
Magnification:	(3) 400X
Chemical Reagents:	(3) acidified chloral hydrate glycerol solution
Sample Findings:	(3) fiber showing whirled striations
Reference Source:	Identification and determination of purity of powdered raw materials labeled as Hoodia gordonii stems, American Herbal Products Association 2007 USP-PF, Vol. 27(2) [Mar.-Apr. 2001]; Official Methods of Analysis of AOAC, 16 th Ed.

Comments & Conclusions:

This sample is representative of Hoodia gordonii aerial part based on authenticated reference samples and the consistent characteristic cellular structure of an aerial part as well as the reference cited above. The characteristic cellular structures identified in this sample are the large thin walled parenchyma showing wrinkled cell walls seen in micrograph (2) above. In micrograph (3) we see the fiber showing whirled striations. **This test sample, Hoodia gordonii (KB0207), is consistent with the microscopic characteristics of the reference samples of Hoodia gordonii used above & is characteristic of Hoodia gordonii aerial part.**

NOTE: The presence of soluble excipients and other plant species material was not detected in this test sample.

Analyzed by: Élan M Sudberg

Authorized by: Sidney Sudberg, Director, Alkemists Pharmaceuticals

Report Date: 5/8/2008

This report applies to the sample investigated and is not necessarily indicative of the quality or condition of apparently identical or similar products. This report is for the exclusive use of the party who requested the report and not for public dissemination or use by third parties, including for promotional purposes, without the prior written permission of Alkemists Pharmaceuticals, Inc. This report provides technical results for a specific sample and the report shall not be altered, modified, supplemented or abstracted in any manner. Any violation of these conditions renders the report and its results void.

© 2008 Alkemists Pharmaceuticals, Inc. All Rights Reserved